

- 1
- 2
- 3
- 4
- 5
- 6
- 7
- 8
- 9
- 10
- 11
- 12
- 13
- 14
- 15
- RH

MATERIAL

Glass-fibre reinforced polyamide based (PA) technopolymer, black colour, matte finish.

STANDARD EXECUTIONS

Black-oxide steel boss, standard reamed hole.

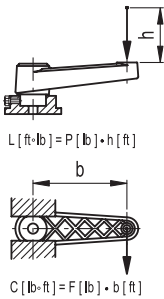
- **MT-AT**: with revolving handle I.621+x (page 500) in technopolymer, not removable.
- **MT-AT+IR**: with fold-away handle IR.620 (page 508) in technopolymer.

FEATURES AND APPLICATIONS

The reticular structure of the crank arm and the technopolymer used make this handle very strong and therefore suitable for transmitting high torque values.

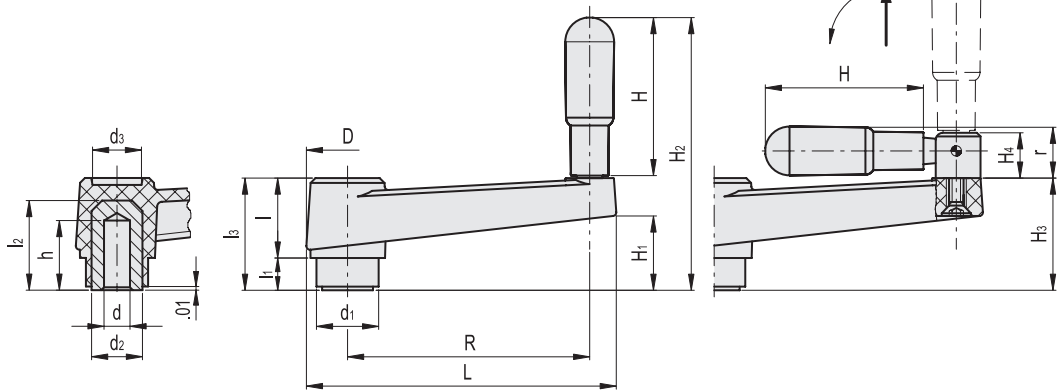


ELESA Original design



MT-AT

MT-AT+IR



MT-AT

INCH

Code	Description	R	d	L	D	d1	d2	d3	l	l1	l2	l3	h	H	H1	H2	C# [ft·lb]	L# [ft·lb]	Δ
944053	MT.50-AT A-5/16	1.97	0.312	2.72	0.89	0.71	0.59	0.51	0.81	0.35	0.91	1.16	0.71	1.38	0.73	2.6	59	5	0.12
944113	MT.64-AT A-3/8	2.52	0.375	3.39	1.04	0.79	0.59	0.63	0.89	0.35	0.98	1.24	0.79	1.77	0.69	3.07	88	8	0.18
944213	MT.80-AT A-3/8	3.15	0.375	4.17	1.18	0.94	0.71	0.67	1.02	0.43	1.22	1.46	0.98	2.36	0.93	3.9	147	11	0.26
944313	MT.100-AT A-1/2	3.94	0.500	5.04	1.32	0.94	0.71	0.83	1.2	0.39	1.22	1.59	0.94	2.56	0.98	4.17	155	20	0.42
944413	MT.130-AT A-5/8	5.12	0.625	6.38	1.54	1.34	1.02	0.98	1.38	0.55	1.69	1.93	1.18	2.56	1.28	4.45	258	33	0.74
944513	MT.160-AT A-3/4	6.3	0.750	7.76	1.73	1.36	1.02	1.06	1.56	0.59	1.69	2.15	1.18	3.15	1.42	5.35	346	41	0.83

MT-AT+IR

INCH

Code	Description	R	d	L	D	d1	d2	d3	l	l1	l2	l3	h	H	H1	H3	H4	r	C# [ft·lb]	L# [ft·lb]	Δ
944117	MT.64-AT+IRA-3/8	2.52	0.375	3.39	1.04	0.79	0.59	0.63	0.89	0.35	0.98	1.24	0.79	1.77	0.69	1.22	0.55	0.63	88	8	0.2
944217	MT.80-AT+IRA-3/8	3.15	0.375	4.17	1.18	0.94	0.71	0.67	1.02	0.43	1.22	1.46	0.98	2.36	0.93	1.46	0.55	0.65	147	11	0.29
944317	MT.100-AT+IRA-1/2	3.94	0.500	5.04	1.32	0.94	0.71	0.83	1.2	0.39	1.22	1.59	0.94	2.56	0.98	1.54	0.73	0.81	155	20	0.44
944417	MT.130-AT+IRA-5/8	5.12	0.625	6.38	1.54	1.34	1.02	0.98	1.38	0.55	1.69	1.93	1.18	2.56	1.34	1.93	0.73	0.81	258	33	0.73
944517	MT.160-AT+IRA-3/4	6.3	0.750	7.76	1.73	1.36	1.02	1.06	1.56	0.59	1.69	2.15	1.18	3.15	1.42	2.13	0.73	0.87	346	41	0.81